



THE GLOW TOUR

Kansas City

REDLINE CHAMPIONSHIPS

2024-2025 INFORMATION
PACKET



redlinecheer



redlinecheer



redlinecheer



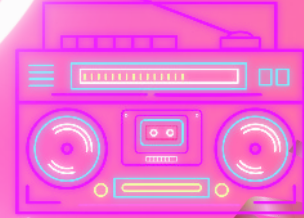
REDLINE CHAMPIONSHIPS +
GLITTERSTARZ, INC.

28TH MARCH 2025



The Glow Tour

Kansas City



THE GLOW TOUR
ATHLETE PARTY

HOSTED AT

THE COLLEGE BASKETBALL
EXPERIENCE

DOORS OPEN AT 6PM - 100% FREE FOR ALL ATHLETES

COACHES & ATHLETES ONLY - 1 CHAPERONE REQUIRED PER TEAM

1401 GRAND BLVD, KANSAS CITY, MO 64106

TO RSVP

CLICK HERE





TABLE OF CONTENTS

- 1 - Championship Information**
- 2 - Coaches' Entrance**
- 2 - Tickets**
- 2 - Parking**
- 3 - Action Photography**
- 3 - Performance Order**
- 4 - Security**
- 5 - Performance Areas**
- 5 - Dressing Rooms and Personal Belongings**
- 5 - Crossovers**
- 6 - Registration and Division Changes**
- 6 - Squad Entrances**
- 7 - Performance Areas**
- 8 - Score Sheets**
- 8 - Payments**
- 9 - Awards**
- 10 - Required Forms and Waivers**
- 11 - Event Maps**





The Glow Tour Hyvee Arena 3/29-30/2025

Hotels:


 HOTELS

**1800 Genessee St, Kansas City,
MO 64102**

Doors open at 7:00am
First Performance at 8:00am

Warm up check in will be inside the Hyvee Arena. You will come through the arena entrance, proceed forward to the team check in area. From there you proceed to the practice space.

A representative from each team must check-in at the warm up area 30 minutes prior to their warm up time.



Athletes will not be allowed to enter through the Coaches Only entrance.



TICKETS

CLICK HERE



The Ticket link will become active on the event page when a ticket link is available.

Admission Includes

- Free Action Photography
- Free broadcast of event
 - www.echeer.tv

PARKING

Parking rates are set by the facility and **NO PORTION** of parking revenue is shared with Redline Cheer and Dance Company. Parking fees typically are \$7-\$10. Please check with the facility in advance to verify correct pricing for parking at the event.

IMPORTANT

For athlete safety, **ALL** coaches must be added onto your RegChamp account prior to the event. We will **NOT** be giving coaches wristbands to anyone not listed. Please email Hunter@Redlinecheer.com to add coaches or verify they are added.



ACTION PHOTOGRAPHY

Redline is proud to announce FREE action photography as part of your ticket fee to the event!

We have partnered with Action Moments to bring these fantastic pictures to you at no additional charge!

Photos can be found on our website by scrolling to the bottom and selecting "Action Photography"

PERFORMANCE ORDER

Tentative performance times will be posted on RegChamp for gym owners and coaches view only the weekend before the event.

A final schedule will be available to the public the Wednesday before the event.

Do not make plans based on any schedule before Wednesday. Redline always attempts to ensure teams from the same program with crossovers do not have overlapping practice and performance times, however, Redline Cheer & Dance cannot guarantee that an overlap will not occur.

To provide a consistent competition and to showcase routine mastery, we only allow the coaches of TINY and EXHIBITION teams to assist their athletes on the floor, or outside of the designated coaches viewing area.



SECURITY

The following items are prohibited by the venue:

Food or beverage, weapons, alcohol, tripods, cameras with telephoto lenses, pets, coolers/flasks, laser pointers, umbrella's, skateboards, roller skates, bikes and scooters. Thank you for your cooperation in this matter.

Because we take the safety and security of our participants seriously, our policy is to protect your privacy and that of all participants. Video cameras and still cameras WILL BE allowed during performances. However, cameras with telephoto lens will not be allowed. If you see an individual taking questionable video or photos, please alert a Redline official. Redline reserves the right to remove any individual.

Always check with the facility website to view updated entrance requirements and restrictions.

PERFORMANCE AREAS

All All-Star Cheer teams will compete on a 42' deep x 54' wide carpeted Spring Floor. Only soft-soled tennis shoes will be allowed on the performance surface. It is important that your routine be choreographed not to exceed these measurements. This is particularly important in planning tumbling passes.

DRESSING ROOMS AND PERSONAL BELONGINGS

Redline accepts no responsibility for lost or stolen items. We recommend that each team designate someone to keep an eye on its possessions.

CROSSOVERS

All crossovers reported at time of registration will pay the crossover fee.

SQUAD ENTRANCES

Due to the number of teams competing, we ask that all teams enter the floor in a timely fashion. Once your team name is called, please do not do any additional chants or team cheers. Staying on time will be crucial to the event. Thank you in advance for relaying this information to your squads.

You have 15 seconds to get set on the performance mat and once finished, 15 seconds to exit the performance mat.

REGISTRATION AND DIVISION CHANGES

Changes in registration or performance order must be submitted through our online schedule change request form.

The Schedule Change Request form has been emailed to all coaches and program directors.

Redline is not responsible for any schedule changes not submitted through that form.

NO Schedule changes will be accepted after final schedule is released.

PRACTICE AREAS

Each team will have an allotted time to practice on multiple stations (Check in/Stretch, Stunt mat, tumbling strip & full mat).

From the practice area, you will move to the "On Deck" area to prepare for your routine. If you miss your practice time, Redline Cheer & Dance cannot guarantee another opportunity to practice in the designated area. You (coach or program director, not full team) will be required to check-in with the Redline official in charge of the practice area 10 minutes before your scheduled practice time. This helps the practice room stay in order and on time and allows the program to adjust for time as well.

Only team members and coaches ***WITH BACKGROUND CHECKS*** may enter the practice area. Family members and spectators will not be admitted to the warm up area. Coaches/Directors must have their credentials from registration to enter the practice area. Redline will provide sound systems for teams with music on electronic devices, and all teams are required to use these systems.

It is your responsibility to provide audio connectors to make your chosen device connect into a standard audio plug.

We recommend using AAU for complete background checks:
www.aausports.org



SCORE SHEETS

Redline will email scores as they become available after each performance. Deductions and legalities will be emailed shortly after your performance. There will be no paper scoresheets available. The email used to send score sheets will be the same email used for registration through RegChamp. We will have a legalities person on hand to discuss, explain deductions and legalities as well as ranges.

****Scoresheets will be emailed. Once you have recieved a scoresheet you have 20 minutes to discuss and review scores at our score review. ****

PAYMENT

Full payment is due at the time of registration and can be in the form of Credit card, cashier's check, Money Order, or official school check. No personal checks, cash, booster club or business checks are accepted unless approved by Redline two weeks or more before the event.

HELPFUL HINT!

Set up your free account on Echeer.TV BEFORE the event to avoid missing performances and awards!

Awards

AWARDS WILL BE PRESENTED TO ALL TEAMS IN EVERY DIVISION. IN ADDITION, THERE WILL BE A HIGH POINT OR GRAND CHAMPION BANNER AWARDED TO THE TEAM WITH THE HIGHEST SCORE IN EACH LEVEL. DEPENDING ON THE EVENT, PRIZES AND AWARDS CAN VARY.

PRIZES WILL NEED TO BE PICKED UP AT THE EVENT BY COACHES ONLY. NO PRIZES WILL BE HANDED OUT ON THE FIELD, THEY WILL BE PICKED UP BY A COACH.



REQUIRED FORMS AND WAIVERS

Liability Release & Event Waiver
Redline Cheer and Dance Requires all athletes to have a waiver filled out before entering the warmup room or performing on the competition floor.

The required waivers for this event can be found in your RegChamp account, or if you prefer a paper copy, you can reach out to Hunter@RedlineCheer.com and you will be provided with one.

ALLSTAR TEAMS: ELITE, PREP, REC, AND NOVICE must complete their rosters on their RegChamp account prior to the event. You may also bring rosters to the event or email them to hello@redlinecheer.com.

SCHOOL CHEER AND DANCE ONLY

School Teams need to bring squad rosters with date of birth and grade. Also, **ALL COACHES NEED SCHOOL ID TO ENTER PRACTICE ROOM.** Two coaches per team are allowed practice area passes.

